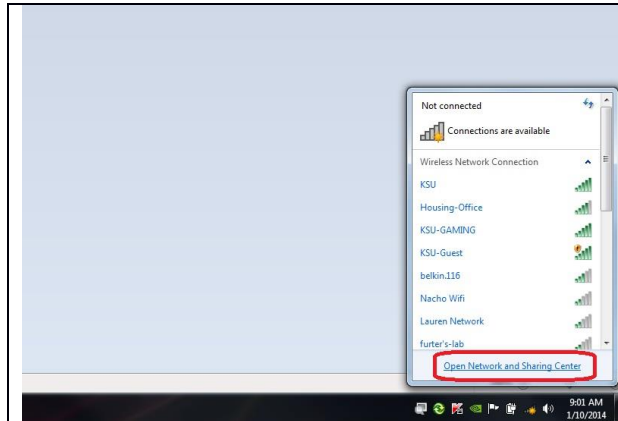
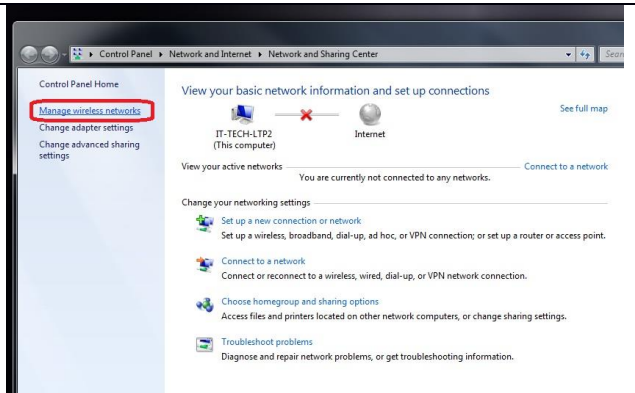


## Connecting to KSU-HOUSING Wi-Fi on Windows 7



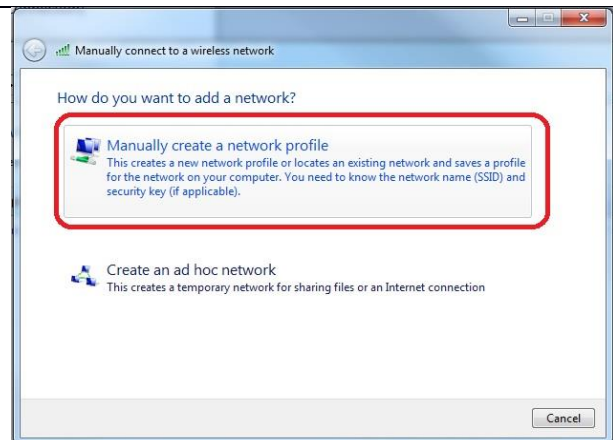
1. On the bottom right of your desktop, open up your wireless networks then open the Network and Sharing Center.



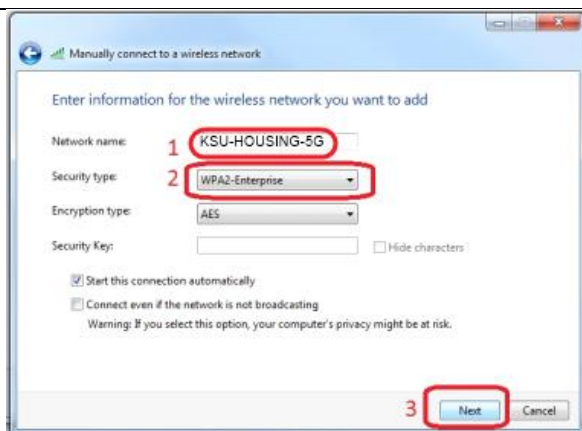
2. Click on Manage wireless networks.



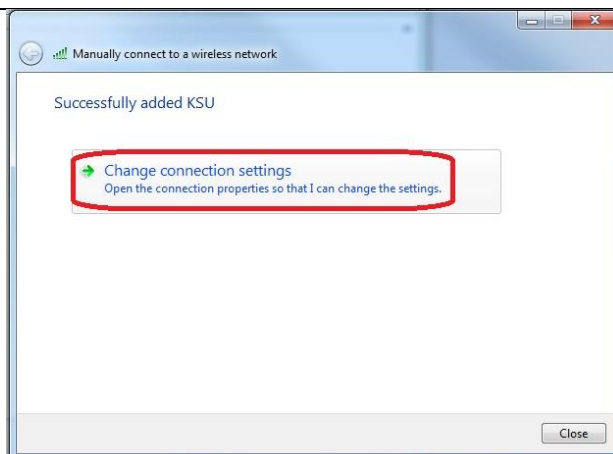
3. Click the Add button.



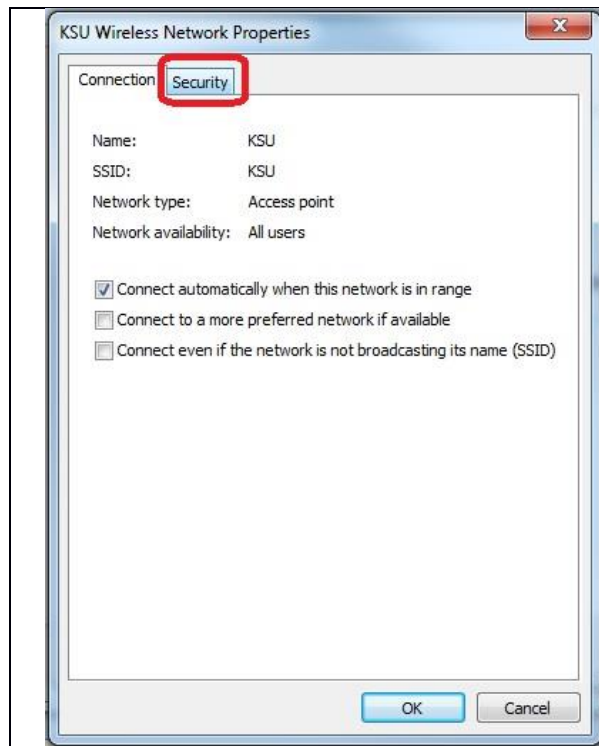
4. Click on Manually create a network profile.



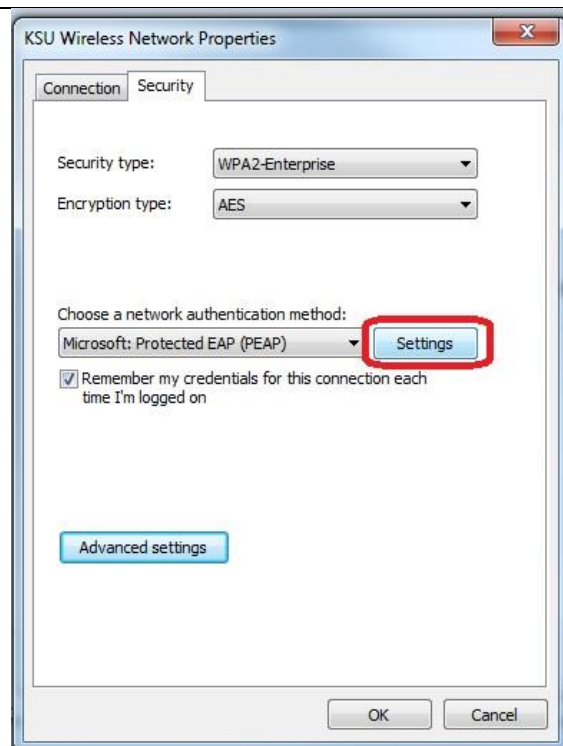
5. Type in **"KSU-HOUSING-5G"** as the network name, change the Security type to WPA2-Enterprise then click Next.



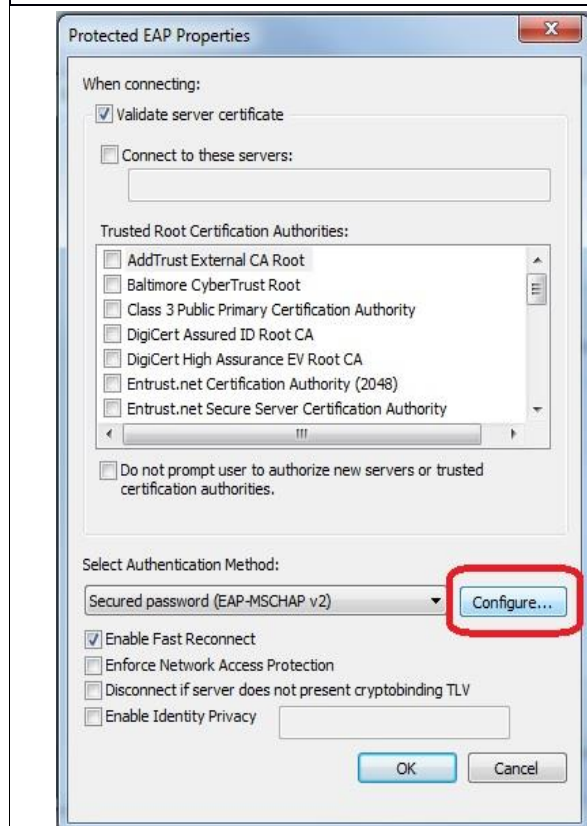
6. The network needs to be configured properly to work. Click on Change connection settings.



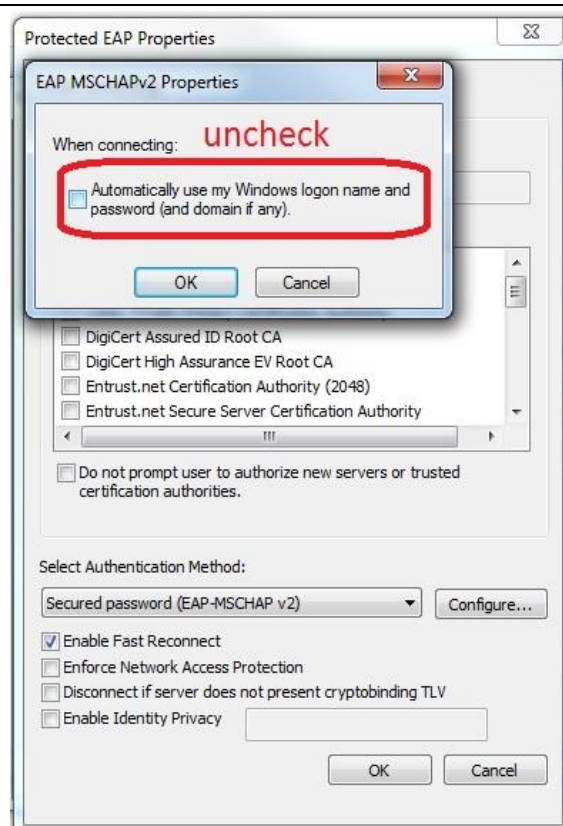
7. Go to the Security tab



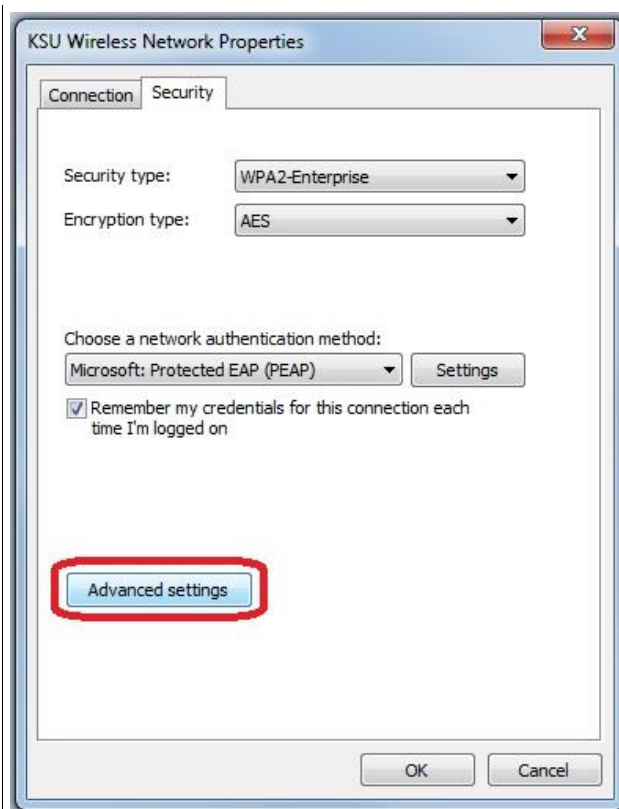
8. Click on Settings next to the network authentication method.



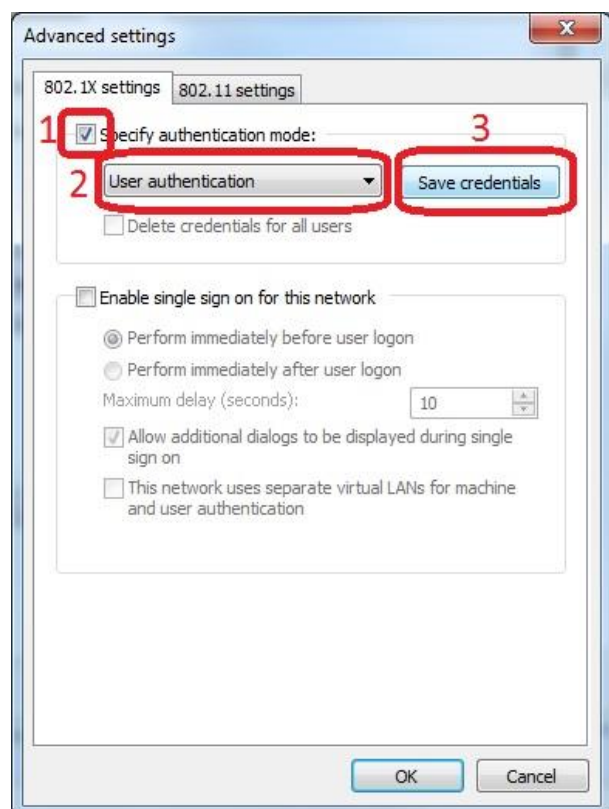
9. Click 'Configure...' under Select Authentication Method.



10. Uncheck the Windows logon name then click OK **twice** to get back to the "KSU Wireless Network Properties" window.



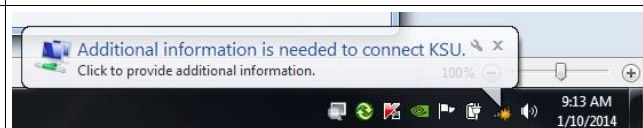
11. When you are back at the KSU Wireless Network Properties window, click Advanced Settings.



12. Check Specify authentication mode, select User authentication then click Save to save your NetID and password credentials to the wireless network profile.



13. Once you have entered in your NetID and Password, click OK.



14. A balloon window will pop up asking you for additional information. Click on this balloon window.



15. Click the Connect button. **You may have to repeat steps 14 and 15 more than one time for it to confirm your selection.**

16. You are now finished adding the KSU wireless network to your computer and your computer should now automatically connect and sign onto the network in the future.